

Global leaders in the teaching, study and practice of equity-driven primary health care and advocacy



To improve health through advocacy, equity and world-leading primary health care, teaching and research

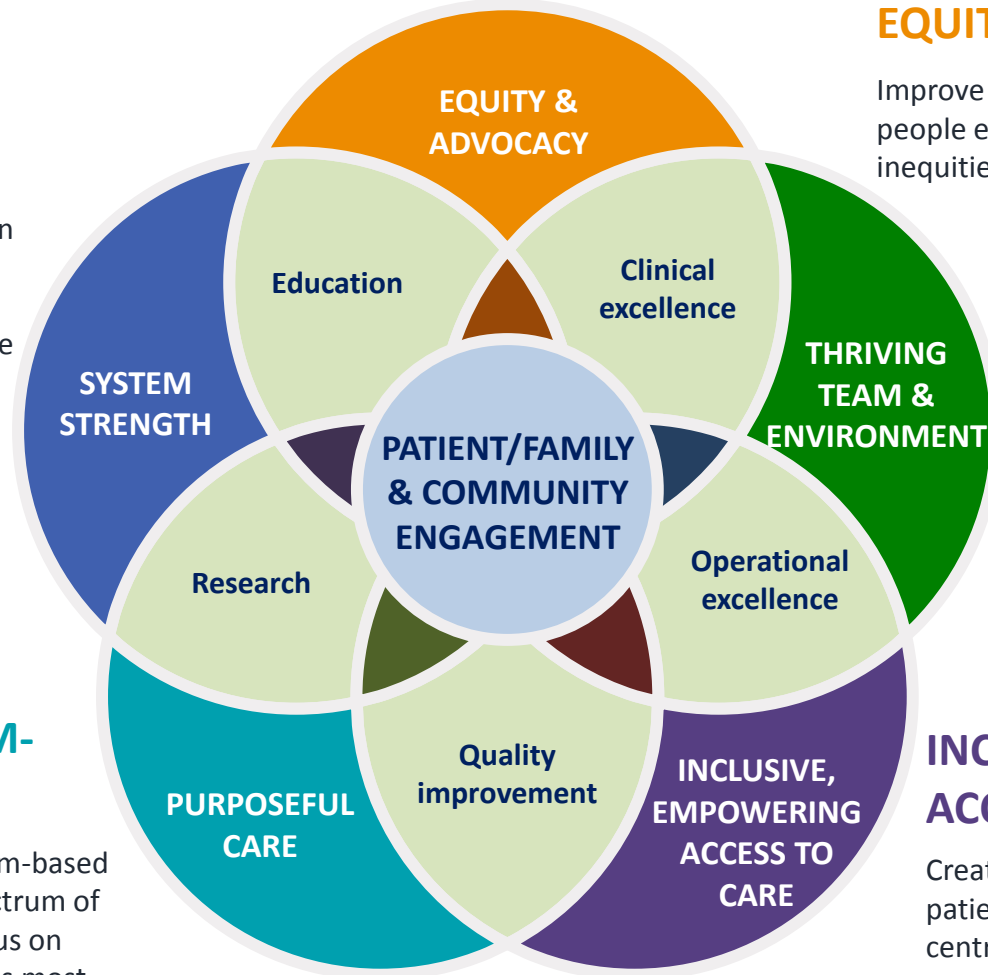
Department of Family and Community Medicine Academic Family Health Team Strategic Plan 2020-2025

SYSTEM STRENGTH

Partner with others to create an integrated healthcare system and share our knowledge and expertise, develop and innovate solutions, and collaborate on research.

PURPOSEFUL TEAM-BASED CARE

Optimize our models of team-based care to provide the full spectrum of high-quality care with a focus on those who need our services most.



EQUITY & ADVOCACY

Improve the health and lives of people experiencing structural inequities.

SUSTAINABLE THRIVING TEAM AND ENVIRONMENT

Strengthen our own wellbeing to cultivate resilience in all aspects of our work and prioritize sustainable environmental choices.

INCLUSIVE, EMPOWERING ACCESS TO CARE

Create multiple pathways to empower patients to access care through patient-centred technology and virtual care.