

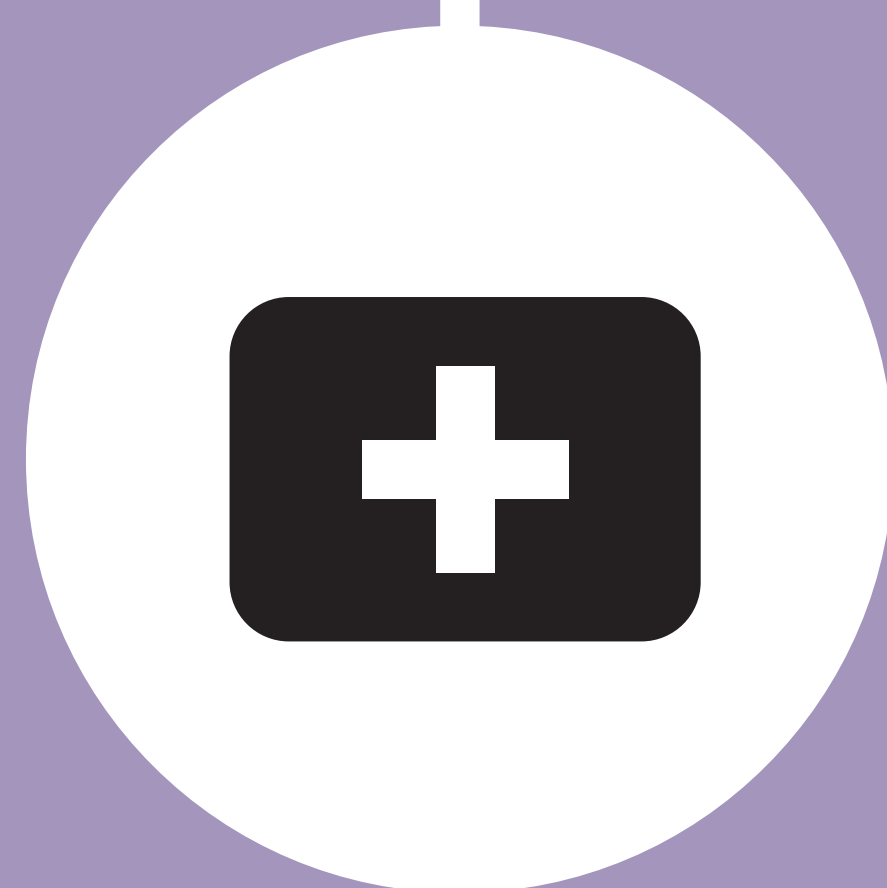
COVID-19

Asymptomatic

What to DO if:



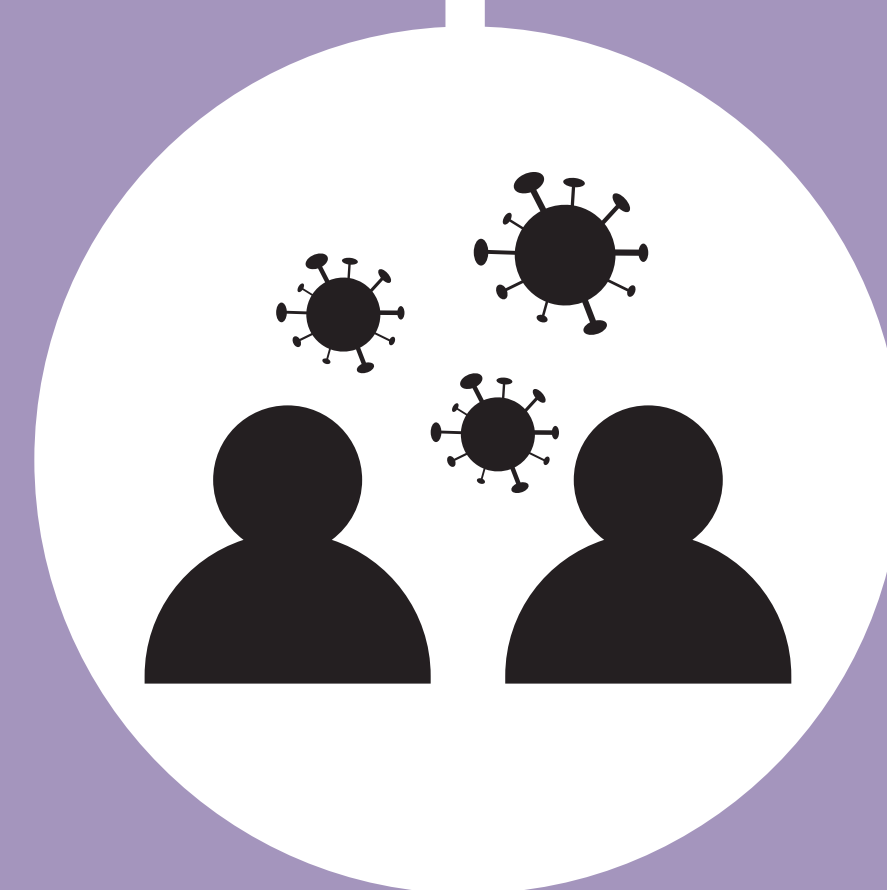
**LTC/ Planned travel/
Precaution**
Self monitor &
physical distance



Surgery
Self-isolate
before procedure



**Return from
Out of Country**
Self-isolate for
14 days from
date of return
*(Even if your result
is negative)*



**Exposure:
Close contact
with someone
COVID-19 positive**
Self-isolate for 14 days
from last date of
exposure *(Even if your
result is negative)*



**Close contact
to someone with
Covid symptoms**
Self-isolate until
results. Follow rules
for exposure if
contact is positive



COVID-19 Alert APP
Self-isolate for 14 days
from exposure or
if unknown; from
date of alert

If your result is positive; follow isolation instructions from Public Health

COVID-19

Symptomatic



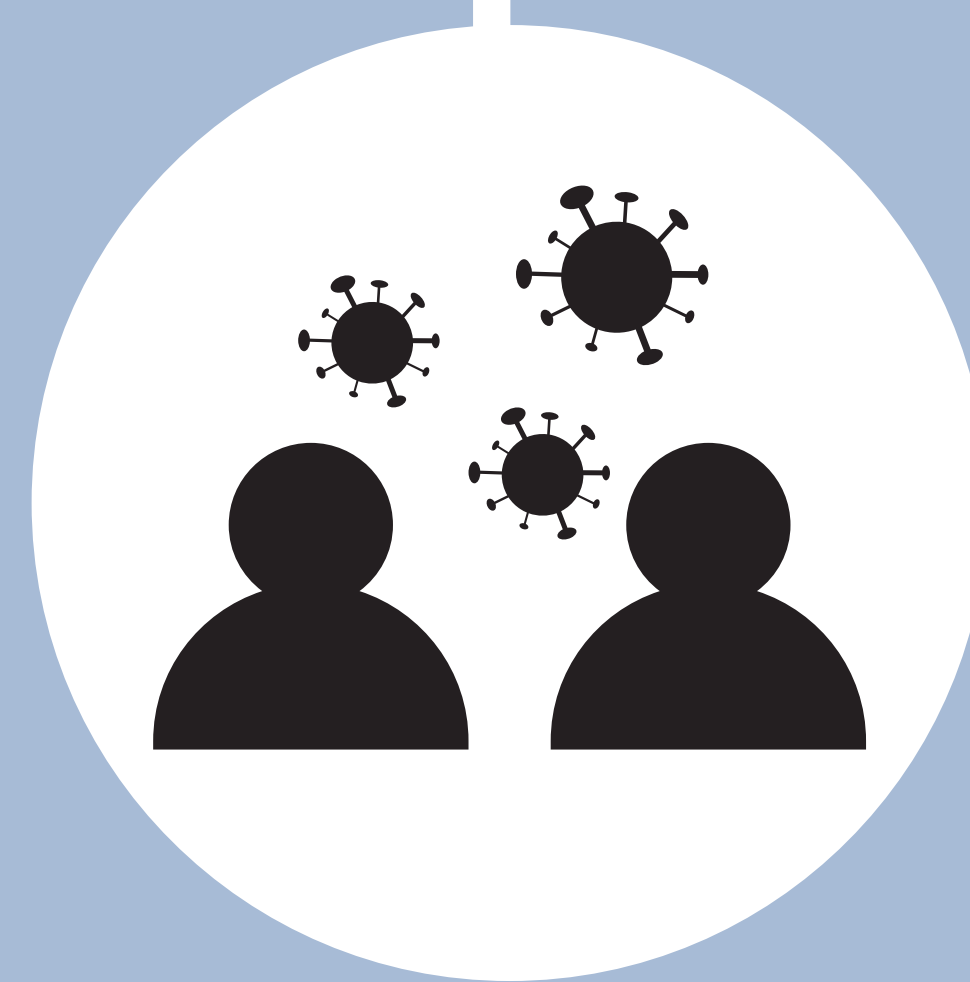
What to DO if:



Symptoms only
Self-isolate until results. If **negative**, isolate until symptom free for 24 hrs



Return from Out of Country
Self-isolate for 14 days from date of return and must be symptom free for 24 hours *(Even if your result is negative)*



Exposure: Close contact with someone COVID-19 positive
Self-isolate for 14 days from the last date of exposure or 10 days from the start of your symptoms; whichever is longer. *(Even if your result is negative)*



Close contact to someone with symptoms
Self-isolate until results. Follow rules for exposure if contact is positive



COVID-19 Alert APP
Self-isolate for 14 days from exposure or if unknown; from date of alert

If your result is positive; follow isolation instructions from Public Health